

IT series

Mains pushbutton switches •
6000 V dielectric strength



DISTINCTIVE FEATURES

Mains pushbutton switches for PC boards
Highest dielectric 6 KV
Latchdown mechanism
Double pole



ELECTRICAL SPECIFICATIONS

- Max. current/voltage rating with resistive load : see table below
- Insulation resistance : 10,000 MΩ min. at 500 VDC
- Dielectric strength : 6,000 Vrms 50 Hz min.
(other components to be kept outside protection area A to preserve 6KV on PCB - see drawing on next page)
- Electrical life at full load : 20,000 cycles

CURRENT/VOLTAGE RATINGS	
CERTIFIED RATINGS	INRUSH CURRENT
IEC 65 NFC 92130 (L.C.I.E. CERTIFICATE)	ACCORDING TO UL1054
1.5/56 A 250 VAC 20,000 CYCLES	TV3 250 VAC 25,000 CYCLES



GENERAL SPECIFICATIONS

- Low level or mechanical life : 50,000 cycles min.
- Operating temperature : -10 °C to +85 °C (+14 °F to +185 °F)
- Storage temperature : -30 °C to +85 °C (-22 °F to +185 °F)
- Total travel : 8 mm (.314)



MATERIALS

- Case and cover : polyester UL VO
- Plunger : polyamide 6-6
- Contacts : silver/nickel alloy (Ag/Ni)
- Other molded parts in UL approved materials

APEM products may be recycled at end-of-life for the re-claiming of valuable metal components.

The company reserves the right to change specifications without notice.

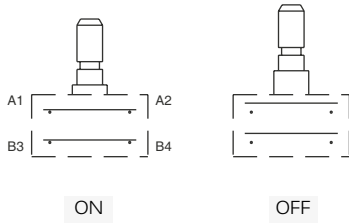


IT series

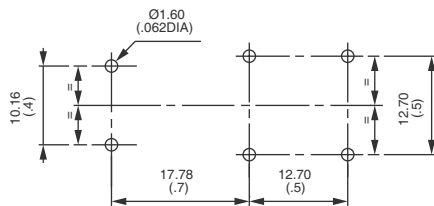
Mains pushbutton switches •
6000 V dielectric strength



ELECTRICAL FUNCTIONS



PCB LAYOUT



6 holes Ø 1.6 (.062)

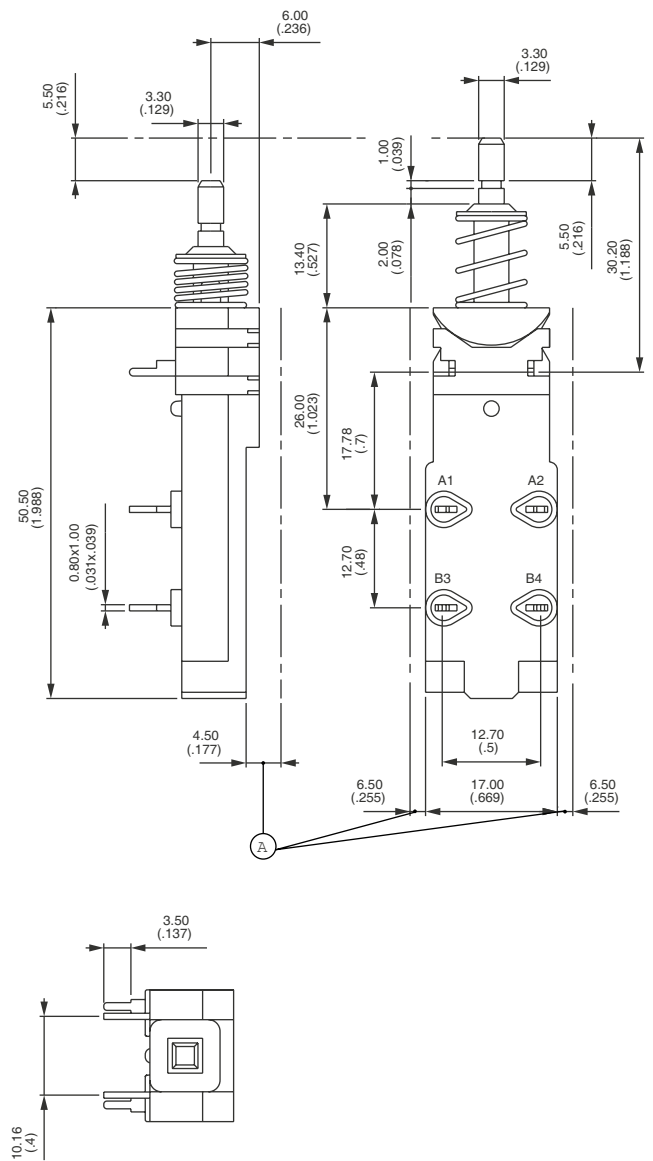
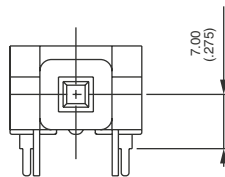
IT series

Mains pushbutton switches •
6000 V dielectric strength

DISTANCE FROM PLUNGER CENTER
TO PCB : 7 (.275)



IT4100200 ON - OFF



CAPS

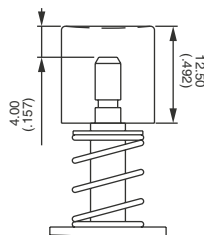
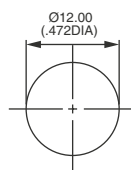
BASIC P/N

+U...

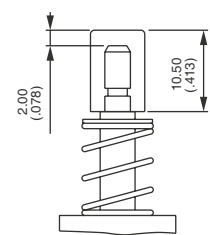
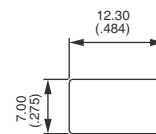
U1670 Round cap
U1680 Rectangular cap

For cap colors, replace "0" by number :

- 1 Blue
- 1/4 Dark Blue
- 2 Black
- 3 Green
- 4 Grey
- 5 Yellow
- 6 Red
- 7/1 White
- 9 Orange



U1670



U1680